


## **INTRODUCING : MS 250-A GEOTECHNICAL DRILLING MACHINE W/ AUTOMATIC SPT**



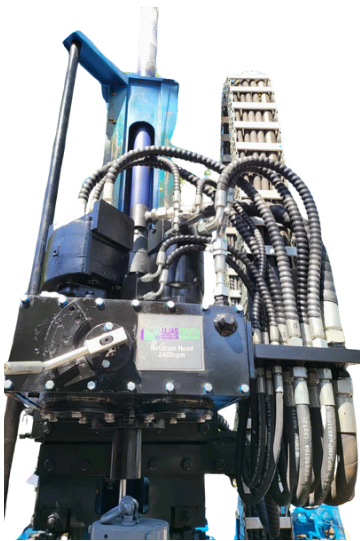
-  Block 23 Lot 44 Sapphire St. Citation Homes,  
Bahay Pare , Meycauayan, Bulacan, 3020
-  +63 9177964052 | 02-87110369
-  mjas\_zenith@yahoo.com  
info@mjaszenith.com
-  www.mjaszenith.com



**Joystick for Remote Control**



**Navigation System**



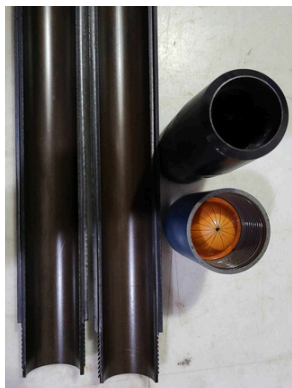
**2400 Rpm Rotation Head**



**Safety Cover For Drilling and SPT**



**Automatic SPT Hammer**



**SPT Spoon with Plastic Catcher**



**Double Breakout Clamps**



**Fuel Tank w/ Temperature Gauge**

## Main Technical Parameters and configuration:

Drilling Depth	250M - 300M
Core Sample Diameter	AW-57mm NQ-69.9m HQ-88.9m
Drill Rod Length	1.5m, Max 2m
Drilling Angle	45°-90°
Diesel Engine Power (Water Cooled)	78kW 4 Stroke
Optional Diesel Engine Power:  	Cummins USA
	DEUTZ Germany
Rotary Head Speed	150-2400
Rotary Head Torque	300N.m - 4500N.m/4.5KN.m
Weight	3.5 T
Dimension	3.6m x 1.7m x 2.1m
Hydraulic Clamp	44mm-220mm

(Optional) Utility Tilt Bed Trailer for Geotechnical Machine:



## Main Technical Parameters and configuration:

Main Winch	1.2T Maximum Capacity
Cylinder Leg	80cm
Built-in Water Pump System	<p>Disc. Capacity: 200L/min.                      Disc. Pressure: 4mpa-6mpa                      Recip. Times: 145 times/mins.                      Stroke: 85mm                      Pulley Speed: 530 r/min.                      Cylinder Diameter: 80mm;                      65mm                      Pump Type: Horizontal</p>
Auto SPT Sampling	31-45 blows per minute with Automatic Counter
Maneuvering	Manual and Remote

